

# TAURUS

By ARGUS SECURITY



## The newest, incredibly powerful and easy to configure EN54-25 wireless system on the market today

Taurus is the new **Argus** wireless fire system technology. Based on **Argus'** consolidated experience in wireless fire protection, it is a totally new protocol, wireless network and range of high-performance detection, control and alarm devices.

The new **TauREX software** provides the most simple and intuitive way to install, commission and maintain your Taurus system.

Taurus ensures unprecedented fire detection performance, application scale and superior reliability.

The Taurus wireless platform can easily answer the needs of both small-medium or large sites, supporting up to 128 devices on a single translator.

Intelligent signal processing across 60 communication channels coupled with our **Mesh Expander Technology** ensures exceptional system reliability in every environment.

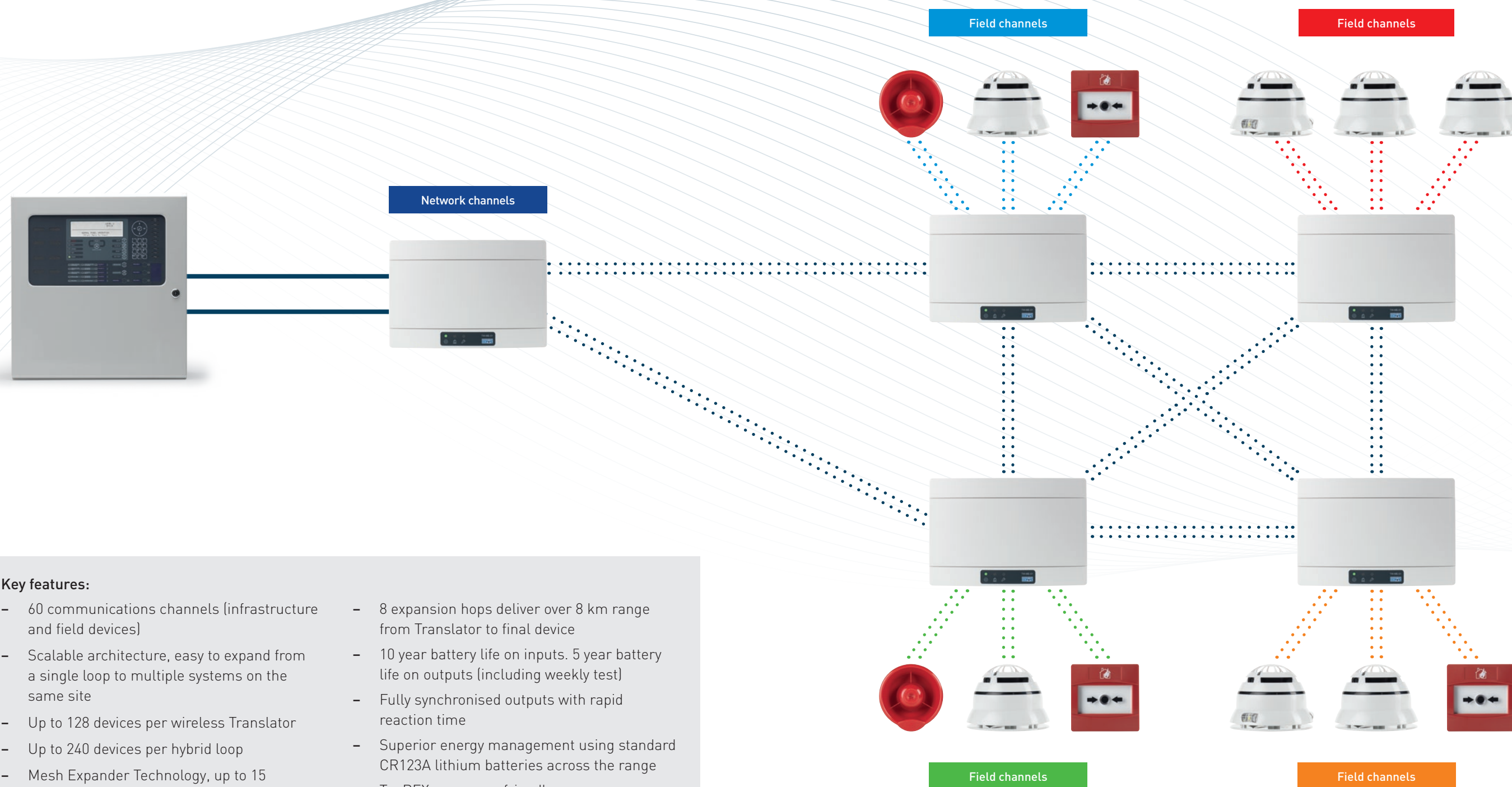
Taurus is energy efficient and environmentally friendly thanks to an innovative electrical design that ensures our battery management is among the best available on the market.

The Taurus technology has the ability to integrate with different protocols and control equipment, operating also in hybrid mode.





# Taurus Wireless Technology



## Key features:

- 60 communications channels (infrastructure and field devices)
- Scalable architecture, easy to expand from a single loop to multiple systems on the same site
- Up to 128 devices per wireless Translator
- Up to 240 devices per hybrid loop
- Mesh Expander Technology, up to 15 Expanders per Translator
- Up to 32 devices per Expander
- Dual Channel Redundancy
- 8 expansion hops deliver over 8 km range from Translator to final device
- 10 year battery life on inputs. 5 year battery life on outputs (including weekly test)
- Fully synchronised outputs with rapid reaction time
- Superior energy management using standard CR123A lithium batteries across the range
- TauREX, new user-friendly survey, installation, commissioning and maintenance software
- Superior field device performance

## Flexible Solution For Any Type Of Building

The Taurus range of products seamlessly integrates with industry standard control equipment to provide a cost effective solution for almost any application. When using the Taurus system you are not restricted to a limited panel range but can access the comprehensive ranges of control panels from our OEM, panel and system integrator partners.

The Taurus products are engineered to provide outstanding performance with a high level of efficiency in all types of installation, regardless of the age, usage or construction of the building in question.

Our wireless technology is flexible and unobtrusive, easy to adapt to different configurations.

- Commercial Properties
- Residential Buildings
- Highrise Buildings
- Healthcare and Education
- Hospitality and Catering Facilities
- Public and Government Buildings
- Schools and Universities
- Historic and Landmark Buildings
- Temporary Event Sites

## Network Optimiser Technology Super-scalable, ultra-reliable wireless

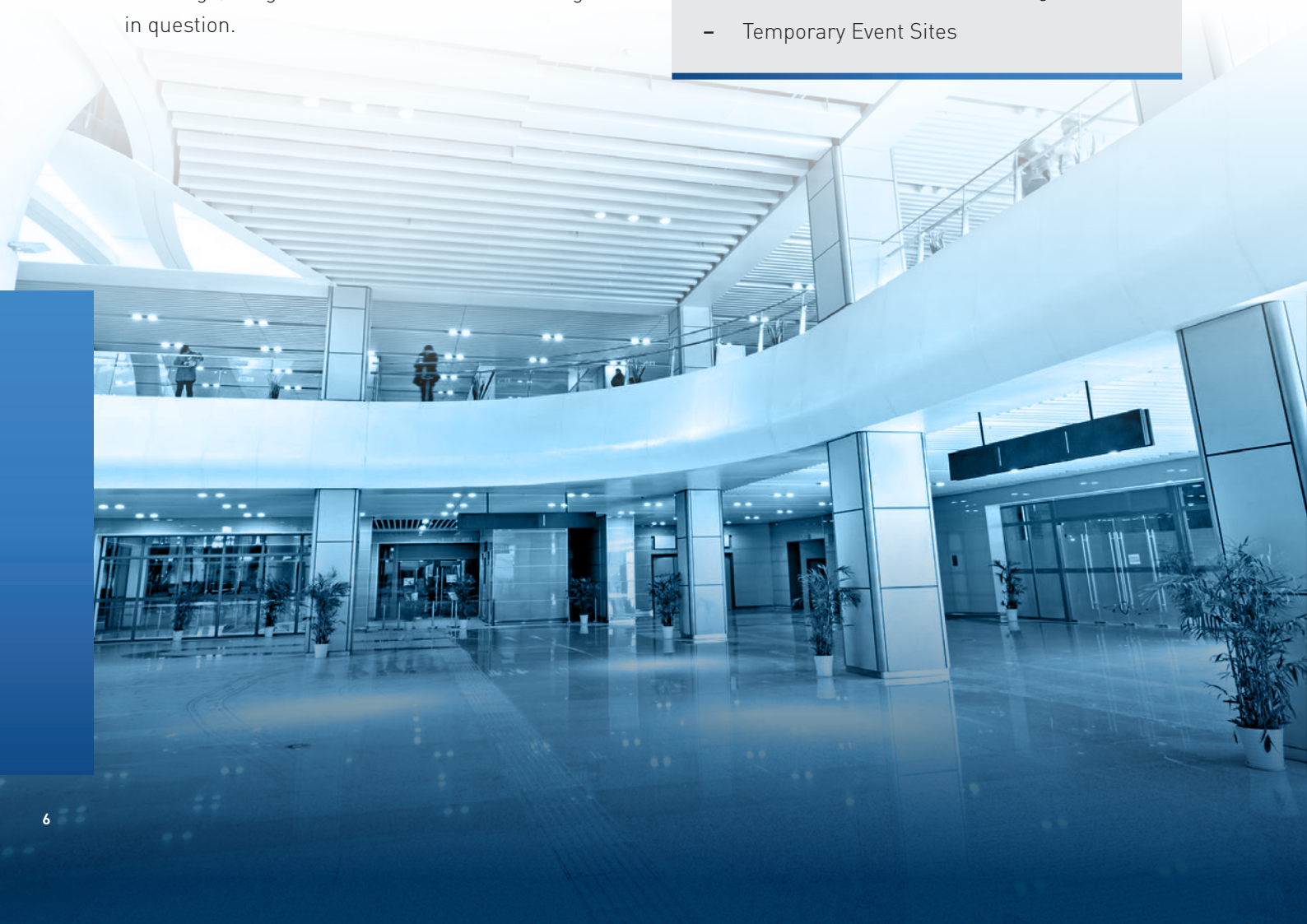
Taurus leaps beyond the performance of existing wireless systems with Argus' NetworkOptimiser communications technology.

Intelligent signal processing and 60 communications channels mean whatever the size of the building, or the overlap of wireless infrastructure within it, you will not suffer any channel collision.

The 60 communications channels are effectively divided by infrastructure and field channels so you can easily expand the system architecture from a single loop to multiple systems on the same site without any mutual influence.

As well as efficiently dividing channels, NetworkOptimiser also checks and confirms that every packet of data is sent and received as expected, ensuring absolute confidence in safety signalling.

NetworkOptimiser means Taurus fire systems can go further, larger, higher and use a wider range of devices. No site is too large or too challenging.

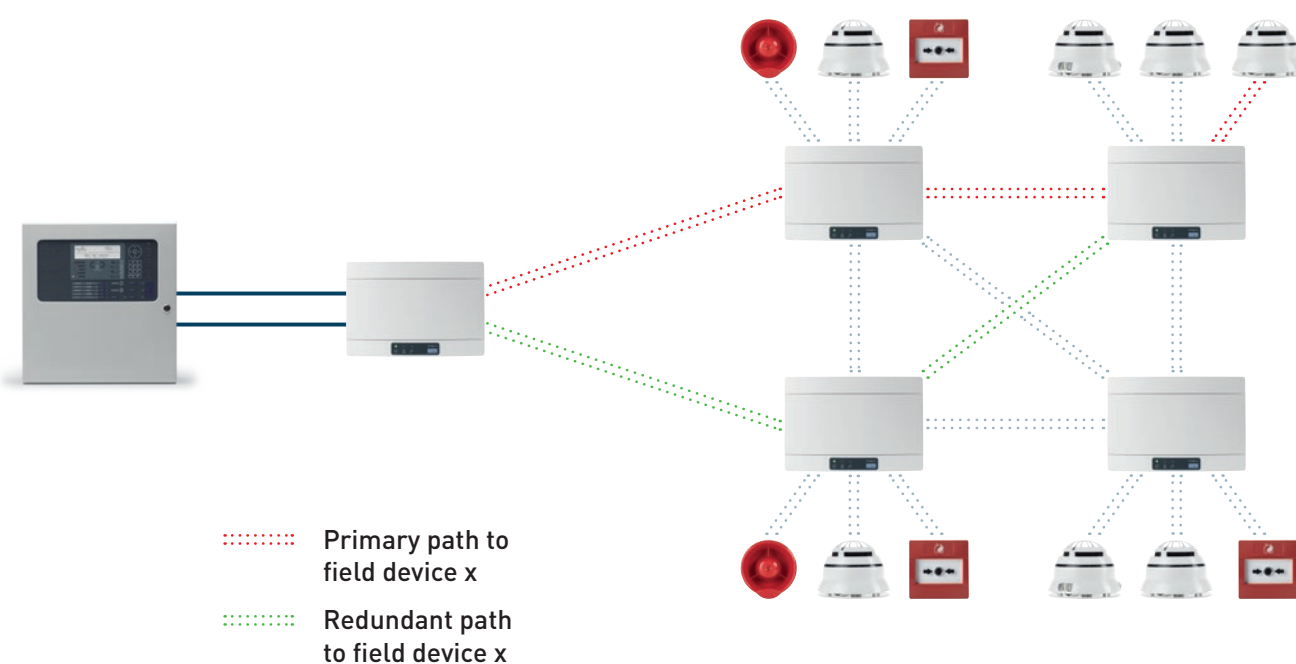




## SafePath Mesh Expander Technology

Taurus Expanders use our SafePath mesh expander technology to deliver unprecedented system reliability and performance. If any expander in the chain fails, the transmission path finds an alternate route, ensuring communication continuity.

Every Taurus translator supports up to 15 network expanders and the best possible redundant communication paths are identified and tested from the beginning, during system commissioning. This provides the most reliable and robust communication pathway possible, making Taurus an ultra-resilient wireless infrastructure.



## SafeSwitch Redundant Channel Technology

Our SafeSwitch dual redundant channel technology, applied to every Taurus device, Translator and Expander, ensures superior system reliability. If one channel is blocked, the other automatically takes over so that every message is correctly delivered when and where required.

Our wireless Translators and Expanders are all backup powered and watchdog restart protected, further enforcing our system's reliability.



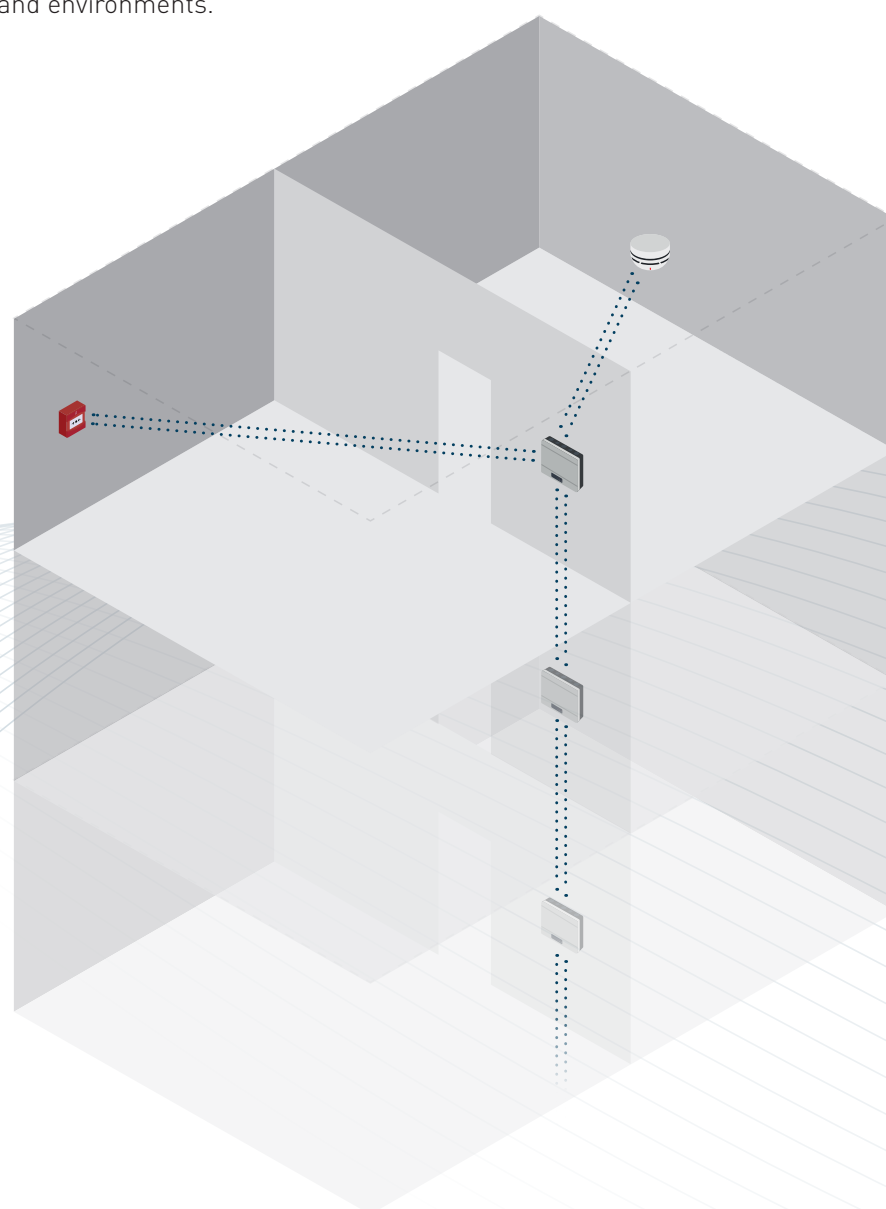


## Pathfinder Technology Infrastructure Range

Translators and expanders have been optimised to deliver the perfect balance of range and confidence with a technology we call Pathfinder.

Point to point transmission range is over 1km in open air and our antenna technology is tuned for performance across frequencies and environments.

Combined with up to 8 expansion hops a Taurus system can cover well over 8km. Other systems rely on a huge amount of infrastructure and power to maintain range and safety, Taurus uses less equipment and less batteries.

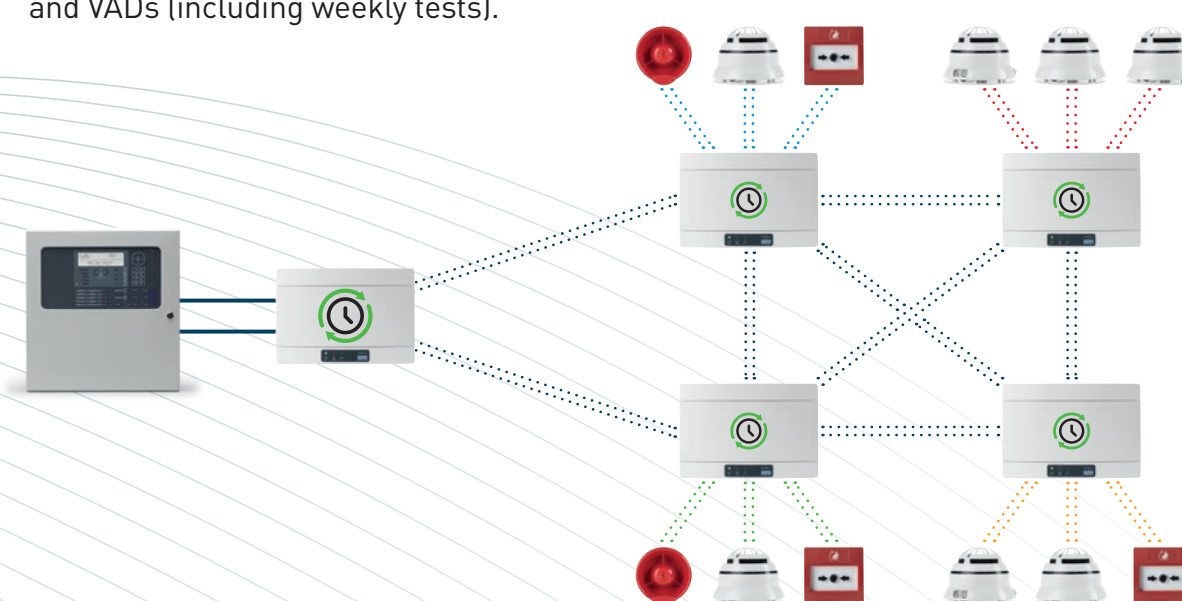


## Optimised Power Management

Taurus achieves maximum performance with minimum environmental impact. Our communications technology ensures all devices communicate every second, and we don't waste power listening or transmitting unnecessarily. This alongside the robust electrical design, means our battery management is among the best available, with 10 year battery life for sensors, call points and inputs and up to 5 years for outputs, sounders and VADs (including weekly tests).

We use standard CR123A lithium batteries, available off the shelf worldwide and at ever improving technology, and of course the best battery life means less batteries.

A five year warranty and proven reliability that last years, means across the life of a system you're unlikely to need to change the devices, and with wireless you can easily reconfigure your system as your building or performance requirements change.



### Taurus uses a synchronous communication protocol:

- Synchronised clock among the field and infrastructure devices
- Unique communication slot for each device to transmit and receive messages without conflicts with other equipment
- Flexible data exchange rate between infrastructure and field devices according to device status (normal/ alarm/fault)
- Longer battery life

# TauREX Software: the easiest way to install, commission and maintain your Taurus fire system

Our new TauREX software provides a simple and intuitive way to configure your Taurus system. A full set of advanced functions is available for system set up, data acquisition, monitoring and reporting.

A user-friendly interface simplifies configuration, reduces install times and provides a clear and complete system overview for easy maintenance.



## EasyScan

All Taurus products are scanned (via a QR code on the box or product) into the configuration tool's Virtual Warehouse, allowing super quick and accurate set-up with no manual entry and massive time savings.



## Drag&Drop

Use real system drawings in our programming tool and drop devices from the Virtual Warehouse straight onto floorplans. Easy setup and linkage of the devices together with associated signal quality display ensure your designs are accurate and your system fully functional in real time.

## One Point Programming

With Taurus you do everything by wirelessly connecting to a Translator. No matter how many devices or how large your site, no more cables, no more walking, no more ladders. Install devices in discovery mode and you'll never need to see them until the next test.

## TauREX Report

Effective reporting provides complete information about system status post commissioning and maintenance.

## ConfigWizard

Once you've finished your design, use Taurus' configuration tool's wizard button to autolearn all your devices onto the system. The simplest and easiest large-scale wireless system programming available.

## LiveDisplay

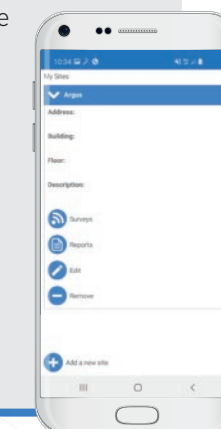
It provides access to a visual display of the system status, for easy control of all system devices in real time.

## Easy fault finding

Taurus devices transmit a vast amount of data to the translator which when accessed live or via the logs gives rich diagnostic data for quick, simple resolution of any issues. No need to find and download from remote Expanders, everything is accessed from a Translator.

## Survey Tool

The new Taurus survey tool is driven by a free app that works on your android device, downloadable from the Google Play Store. It makes surveys simple and accurate and automatically delivers and saves detailed reports to help with compliance and design. The new app allows you to manage your whole portfolio of sites and surveys.





## SecureSync Responsiveness

Taurus delivers fast-response with all output devices harmonised at the same time for clear sound and concurrent activation of interface modules, meaning when you really need to notify or evacuate, Taurus will always perform. It also means that resets, delays and false alarm management hush buttons will work quickly and easily.



## The Key Advantages of Wireless Fire Systems

The Taurus technology is extremely easy to install and represents a cost-effective solution compared to the traditional cabled systems.

The Taurus wireless devices, eliminating the need for complex cable networks and all of the problems they can bring, allow to complete the installation in a very short time - a few days and not weeks or months as for wired solutions - limiting time and direct contacts on site, minimizing the disturbance for tenants and disruption to site. The system survey defines exactly the wireless infrastructure required, so equipment costs are guaranteed and fixed. The devices can be pre-programmed quickly and easily off site contributing to increase the speed of installation and reducing the people required to install. Project costs are optimized and deadlines almost guaranteed.



Wireless fire systems require robust EN54-25 approved wireless infrastructure and fully EN54 approved sensing, control and alarm products. The Taurus product line, fully certified to the relevant EN54 standards, offers the highest performing range of fire sensing and notification technology available.



## Detection Devices



### Wireless Optical Smoke Detector

Dual optical smoke detection with smart algorithms and three sensitivity mode settings deliver unparalleled performance across a range of smoke types, and the best false alarm rejection across a wide range of environments.

Advanced optical chamber design ensures high optical performance while a reverse sedimentation dust trap makes our optical sensors the most contaminant resistant on the market, for better performance and less maintenance.

Our dual channel optical smoke detector is unique amongst wireless fire detectors.

**EN54-7, EN54-25 approved.**



### Wireless Multi-criteria Detector

Taurus product line includes one of the very few multi-criteria detectors available on a wireless fire system.

It combines our smart algorithms and dual optical sensing with A1R heat sensing.

**EN54-7, EN54-5, EN54-25 approved.**



### Wireless Heat Detector

Our wireless heat detector is a high-performance unit with A1R rate of rise or BS static profile, programmable from one device for reduced inventory.

**EN54-5, EN54-25 approved.**



### Wireless Resettable Call Point

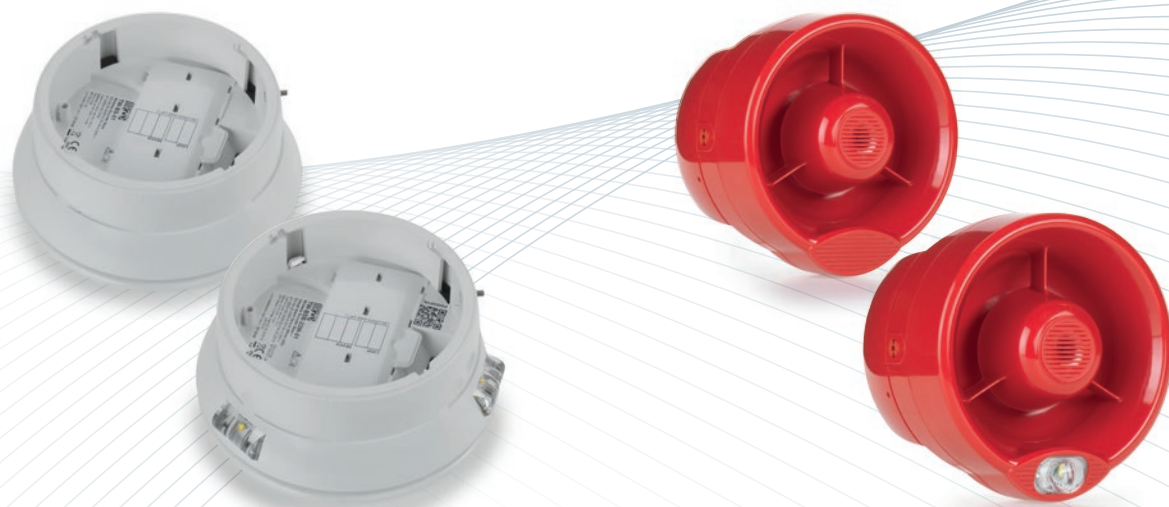
Designed for clear notification and easy installation, our wireless MCP has quick and simple resets with clear signal flags.

A led light allows the alarm condition to be viewed over a wide angle. Without the need of screws or any tools the front operating element snaps into place by simply pressing it, for an easy installation.

**EN54-11 and EN54-25 approved.**

## Alarm and Warning Devices

## Modules



### Wireless Sounder Base/Sounder VAD Base (Red or White LED)

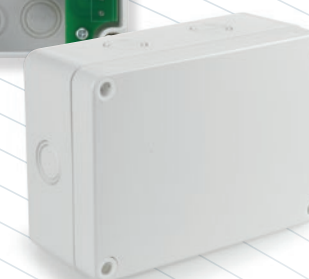
Our EN54-3, EN54-23 and EN54-25 wireless ceiling sounder and sounder beacon range has been designed for simplicity and performance. Base sounders and sounder beacons can be used without a detection device, and with a blanking cap.

Both devices can be tuned to their location with programmable volume level, coverage areas and a wide range of tones.

### Wireless, Waterproof Wall Sounder/Sounder VAD

Our EN54-3, EN54-23 wireless wall sounder and sounder beacon range has been designed to offer quick, flexible installs in any environment.

The housing is waterproof rated and so suitable for interior or exterior installation.



### Wireless Battery Powered Input Module

The Input Module is fully supervised for alarm and fault conditions. It is engineered to deliver 10 year battery life and designed for simple integration of third party equipment.

It ensures the highest levels of life safety and system reliability.

**EN54-18, EN54-25 approved.**



### Wireless Battery Powered Output Module

The Output Module has been designed to allow easy control of a variety of third party equipment including access control doors, ventilation plant and fire extinguishing systems.

Output circuits are fully supervised for fault conditions. The output is capable of supplying power for operating low current third party equipment directly from the internal batteries.

**EN54-18, EN54-25 approved.**



## Translator and Expander Modules



### Wire to Wireless Translator Module

The Taurus wireless translator creates our unique wireless infrastructure. Up to 128 devices can be attached to a single Translator allowing wireless coverage to scale in ways not possible before.

Our PassProtect technology allows to lock the translator with a password, preventing the risk of unauthorized access.

**EN54-17, EN54-18, EN54-25 approved.**

### Wireless Expander Module

Our Expanders allow the wireless network to scale, they extend the range and stability of the network by up to 1km and offer mesh expander technology to ensure communication continuity in the event of a failure.

**EN54-18, EN54-25 approved.**

### Wireless Conventional System Expander Module

The Taurus Conventional Interface module allows you to use Taurus wireless devices with almost any control panel, both conventional or addressable systems.

**EN54-18, EN54-25 approved.**

# About Argus Security



Argus Security is one of the world's leading designers and manufacturers of wireless and wired smoke detection and alarm devices. Argus Security has been established for 20 years and today employs over 100 experts in the design, manufacture and supply of high-performance fire protection products for international OEMs, panel partners and fire system integrators.

The Argus' global centre of wireless fire device design is based in Trieste, Italy, working on a portfolio of world leading innovative detection and alarm devices.

## OEM Partners

Argus has been providing OEM products for over 20 years and have a number of routes to achieve own brand products, from full protocol integration to cross listing. Our product management and engineering department is designed to make this process as quick and as simple as possible.

## Panel Partners

Argus' unique, high performance communication protocol is used by a number of high quality panel manufacturers around the world. Argus' protocol is quick and easy to implement with the guidance and support of our engineering and validation team.

## Integrator Partners

We work with a number of high-quality fire system integrator businesses globally that buy Argus protocol panels from the manufacturer and Argus wired or wireless devices, to supply them in a local market.

We are part of Halma plc, one of the largest and most successful companies in Europe with a purpose to deliver a safer, cleaner and healthier world for everyone, every day. Halma works globally across three main areas: safety, health and environmental technologies





ARGUS SECURITY  
  
intelligent fire solutions

**TAURUS**   
By ARGUS SECURITY

Argus Security S.R.L.  
Via del Canneto, 14  
Localita' Vignano Z.I.  
Valle delle Noghère  
34015 Muggia  
Trieste - ITALY

T: +39 040 2396411  
F: +39 040 2823483

E: [info@argussecurity.it](mailto:info@argussecurity.it)  
W: [www.argussecurity.it](http://www.argussecurity.it)