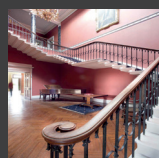


"A modern military base has a diverse set of buildings and facilities, everything from sleeping accommodation and aircraft refuelling facilities to a bowling alley. A hybrid wireless fire system helps us accommodate all these requirements!"

Peter Heath – Turner FM- RAF Brize Norton

PROJECTS

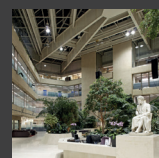


**RISE HALL – SARAH BEENEY**

Sarah Beene's televised renovation project of her Grade 1 listed residence.

**PRODUCTS & SOLUTIONS**

250 devices were installed painstakingly to avoid disrupting the beautiful decor.



**COUTTS BANK - LONDON**

The headquarters of the famous Coutts bank on the Strand London.

**PRODUCTS & SOLUTIONS**

Addition of a small amount of detection and alarm devices in a difficult to wire location. Onto an existing wired system.



**TY GLAS - HMRC CARDIFF**

Large revenues and customs operational site with 3000 employees in Cardiff. 39354 m2 in size

**PRODUCTS & SOLUTIONS**

3500 devices were installed within a 20 panel network. There was an asbestos risk which was overcome by using the Hyfire wireless range.



**ETON COLLEGE**

World famous educational establishment in a Grade 1 listed building.

**PRODUCTS & SOLUTIONS**

A networked multi panel hybrid (wired and wireless) system. In excess of 300 wireless devices were deployed with little or no impact on the day to day college activities.



**CORK AIRPORT**

Airport Terminal Building in Southern Ireland

**PRODUCTS & SOLUTIONS**

Addition of a small amount of detection and alarm devices in a difficult to wire location. Onto an existing wired system.



**HSBC - PARK ST, LONDON**

Major bank data centre and offices

**PRODUCTS & SOLUTIONS**

Temporary system integrated with a new system as it was installed to keep the building fully covered during the fire system replacement program.



**NUNEATON & BEDWORTH COUNCIL, WARWICKSHIRE**

Town Hall Listed Building

**PRODUCTS & SOLUTIONS**

Additions to an existing wired system in difficult areas.



**GALLERIA**

A large shopping centre in Hertfordshire, UK

**PRODUCTS & SOLUTIONS**

Addition of wireless call points onto a Glass entrance façade which made the installation of cable or containment impossible.

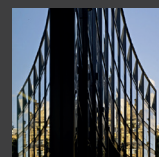


**CIRQUE DU SOLEIL**

A touring artistic entertainment circus recognized all over the world

**PRODUCTS & SOLUTIONS**

Due to the circus being a temporary structure and used all over the world, they wanted a flexible system.



**ANGEL BUILDING - LONDON**

The installation of a hybrid fire detection and alarm system to a ultra modern new build office facility in London.

**PRODUCTS & SOLUTIONS**

The use of wireless in this project was determined by the building's architecture. Wireless was also the only solution which gave the client the flexibility required for future tenant fit outs.